



CREMATION GARDEN  
at WEST LAWN MEMORIAL PARK

## WHY IS HAVING A PLACE TO VISIT SO IMPORTANT?

- People find it important to have a meaningful place to visit on special days such as anniversaries, birthdays, or Memorial Day.
- To remember and be remembered are natural human needs, and future generations will have a place to connect with their family's roots.
- A memorial location provides a focal point for remembering in a safe, beautiful environment.
- Memorialization serves an important emotional function for survivors by assisting the grieving process.
- Our cemeteries have established a 'Perpetual Care Trust' to ensure that the grounds are cared for indefinitely.



VALLEY VIEW ROOM  
at SPRINGFIELD MEMORIAL GARDENS



MUSGROVE  
*Mortuaries & Cemeteries*

## LOCAL CEMETERIES THAT CAN ASSIST YOU WITH CREMATION DECISIONS

VISIT US ONLINE at  
[www.Musgroves.com](http://www.Musgroves.com)

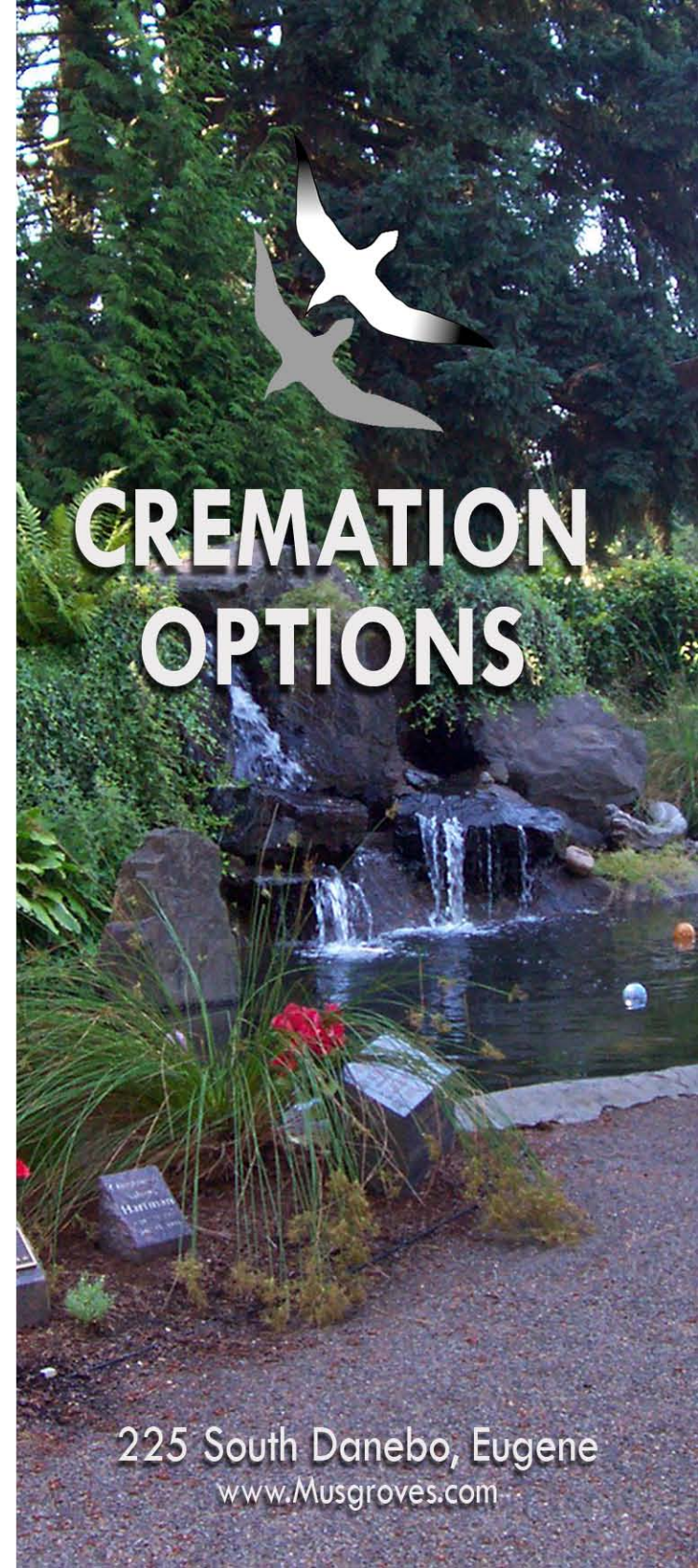
WEST LAWN MEMORIAL PARK  
225 South Danebo Avenue  
Eugene, OR 97402  
541.342.8281

LANE MEMORIAL GARDENS  
5300 West 11th Avenue  
Eugene, OR 97402  
541.343.1684

SPRINGFIELD MEMORIAL GARDENS  
7305 Main Street  
Springfield, OR 97478  
541.746.5311

MOUNT CALVARY CEMETERY  
220 Crest Drive  
Eugene, OR 97405  
541.686.8722

We believe that people and our relationships with them are the most important things in life. Therefore, we are dedicated to acknowledging, celebrating, and remembering lives lived. Through our core values of compassion, integrity, and respect, we will provide our client families and their guests with professional loving care as we strive for excellence.



## CREMATION OPTIONS

225 South Danebo, Eugene  
[www.Musgroves.com](http://www.Musgroves.com)

# DECISIONS. . .

Once cremation has taken place, families have important decisions to make regarding the final placement of the cremated remains and for a permanent remembrance of the one who has died.

There are numerous options, including:

- ✈ Burial in a traditional family cemetery plot or urn garden
- ✈ Placement in either an indoor or outdoor columbarium
- ✈ Burial or scattering on private or public land, or at sea
- ✈ Keep at home
- ✈ Dividing the cremated remains to accomplish a combination of the options listed above

Because scattering or keeping the cremated remains at home does not satisfy the need for a permanent place of remembrance, options ranging from a memorial plaque to a park bench are available at all of our cemeteries.

This allows for a place where generations of family and friends can have a beautiful and convenient location to visit, remember, and honor loved ones.



PERSONALIZED GLASS FRONT NICHE

Laws governing the scattering of cremated remains can vary from state to state. Your Funeral Director will advise you about the rules and regulations for Oregon.

Some religious or spiritual groups, including the Catholic Church, forbid the scattering of cremated remains or dividing them into more than one urn. Placement in a cemetery is required. In Lane County, the Catholic Cemetery is Mount Calvary Cemetery, located in Eugene.



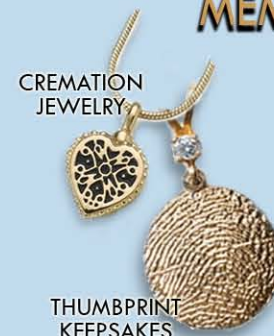
Some other considerations before deciding to scatter include:

- ✈ Will scattering honor the wishes of the entire family?
- ✈ Will there be any physical difficulties in order to properly scatter the remains?
- ✈ Will the scattering location be developed or have limited access in the future?
- ✈ Is it understood that scattering is an irreversible step, and that the remains are most likely irretrievable?

Many families choose to scatter a portion of the remains and reserve a portion at the cemetery. For those who scatter all of the remains, our cemeteries have memorials upon which to permanently engrave your loved one's name.

This ensures a special place for families to visit.

# URNS and MEMORIAL KEEPSAKES



CREMATION JEWELRY

THUMBPRINT KEEPSAKES

There are unlimited options when choosing a meaningful way to remember a loved one. We can guide you through the process and ensure that you choose the memorialization options that are the best fit for your family.

Personalized keepsakes such as Thumbies®, miniature urns, photographic appliques, and cremation jewelry encourage families to create personal and meaningful tributes and can play an important role in the healing process.

## BIODEGRADABLE/ SCATTERING URNS



## PERSONALIZED URNS and EMBLEMS

